

Double-Wrapped Ring

By Marney Callicott

This is a ring I designed after learning to make wire wrapped rings. This ring is twice wrapped, once to make the body of the ring and a second time to give the ring more stability and texture. It contains a glass focal bead and copper filled colored wire.



Materials List

- 18 gauge copper filled wire (such as Artistic Wire or other preferred brand)
- 20 gauge copper filled wire
- Focal bead

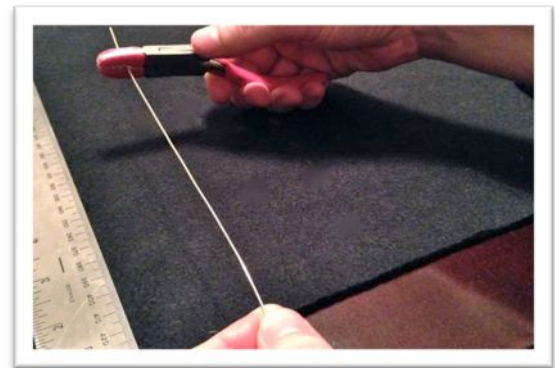
Tool List – Don't forget Safety Glasses!

- WUBBERS Classic Wubbers Classic Chain Nose Pliers
- Flush wire cutters
- Nylon jaw pliers
- Safety glasses
- Ring mandrel

Measure the Wire

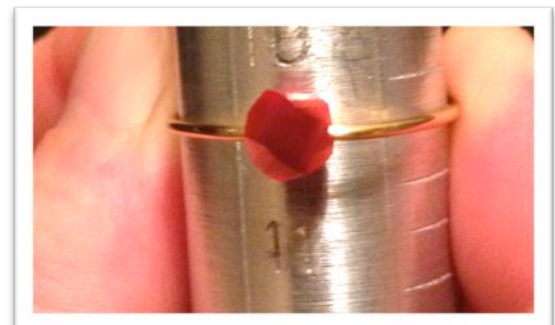
Step 1. First, put on your safety glasses. Take the 18 gauge wire, and straighten it with nylon jaw pliers. Measure approximately 18 inches of wire for a size 8 ring; if the desired ring size is a size or two smaller or larger, this measurement of wire should work. Otherwise, use more wire if the desired ring size is much larger. Once the wire is measured, cut the wire using flush wire cutters.

With nylon jaw pliers, straighten and measure approximately 30 inches of 20 gauge wire. Measure a longer piece of wire if the desired ring size is larger than a size 10. Cut the wire and set aside.

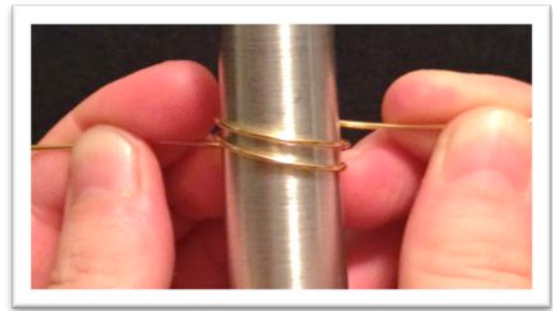


Forming the Ring

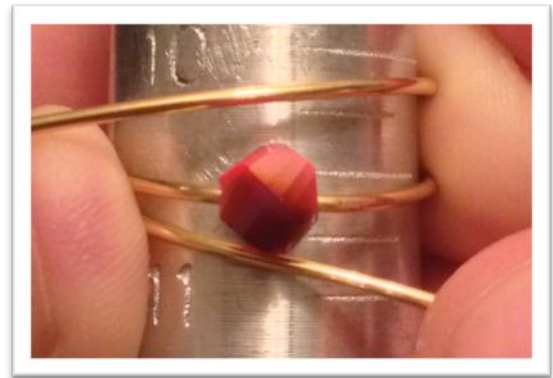
Step 2. Thread the bead in the center of the 18 gauge wire. Choose which size to wrap the wire on the mandrel. For a size 8 ring, the wire was wrapped around the mandrel at approximately a 10 ½. There will be a small amount of leeway once the ring is completed to stretch the ring a little larger (approximately ½ of a ring size). If a glass bead is chosen, be careful with pressure and rubbing along the mandrel; glass may chip or be damaged. Wrap the wire behind the mandrel.



Step 3. Bring the wire back to the front by wrapping one side higher and the other side lower, so each side does not overlap.

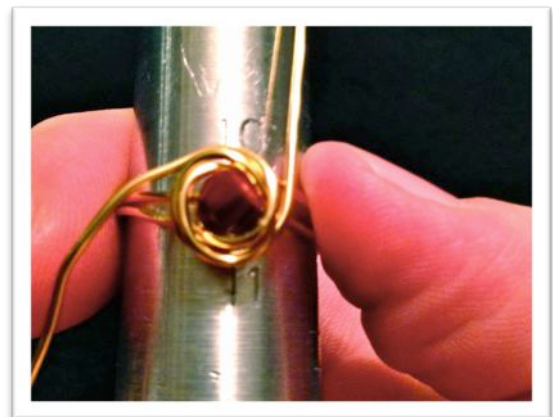


Step 4. Continue bringing the wire forward around the mandrel, keeping the ends from overlapping over the first bend of wire and the bead. Stop forming the body of the ring once the two sides of wire are above and below the bead.

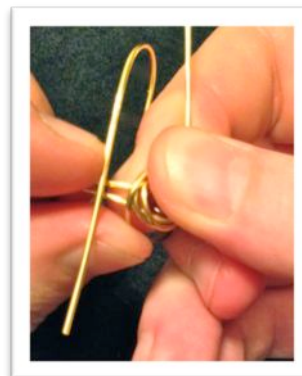


Step 5. At this point, it is important to make sure the ring is wrapped around the correct size on the mandrel. For this size 8 ring, the wire is being wrapped around the mandrel between the size 10 measurement and the size 11 measurement.

Once the ring is in position, begin to wrap the wires around the bead to form a swirl pattern around the bead. The bead in the featured ring has been wrapped 2 times.



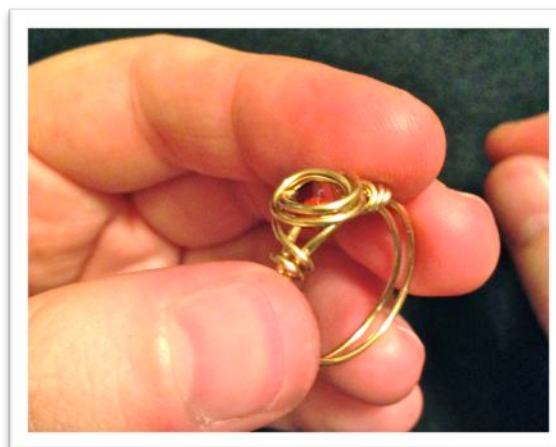
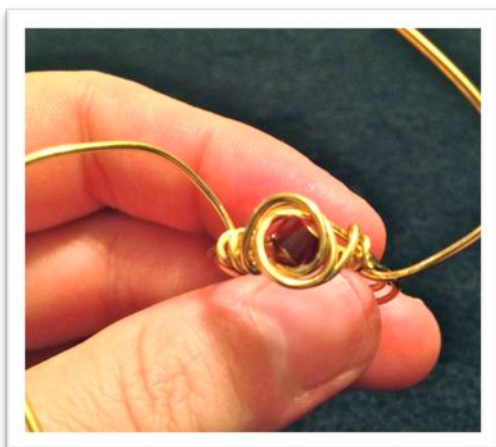
Step 6. When the wire is wrapped around the bead the desired number of times, remove ring from mandrel and wrap each end around the body of the ring on each side of the bead, wrapping somewhat closely to the bead.



Step 7. Wubbers Classic Chain Nose Pliers can help with fitting the wire more snugly around the ring base. Simply wrap and slowly squeeze the pliers over the most recently formed loop. Continue pulling and snugging the wire around the ring base to secure the ring design in place.



Step 8. Trim the ends with flush cutters. Use the Wubbers Classic Chain Nose Pliers to form the trimmed edges to the ring base.

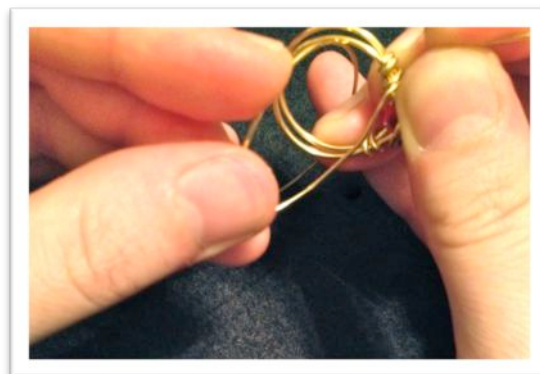


Wrapping the Ring Body

Step 9. Leaving about a 2 inch tail, begin wrapping the 20 gauge wire near one side of the bead. The featured ring had the 20 gauge wire wrapped over the 18 gauge on either side.

Wrap wire in loops around the ring, spacing as evenly as possible. The double wrapped ring's loops were also snugged together as closely as possible.

Once the ring is wrapped, trim the ends with the flush cutters. Try to trim the ends on the sides or top of the ring body, avoiding the inside. The inside should be as comfortable as possible. Once the ends are trimmed, use the Wubbers Classic Chain Nose Pliers to snug the ends smoothly to the ring body.



Finishing the Ring

Step 10. Place the ring on the mandrel to form the appropriate size. The ring won't stretch very much, maybe a half of a ring size or so.



The ring is now ready to wear.



Review Questions

- 1) True/False. It's not necessary to wear safety glasses when wire wrapping.
 - a) True
 - b) False
- 2) For a size 8 ring, what measurement on the ring mandrel is used?
 - a) 6-1/2
 - b) 10-1/2
 - c) 13-1/2
- 3) True/False. Try to trim the ends of the wire so they sit on the inside, where they aren't seen.
 - a) True
 - b) False

- 4) When wire wrapping the band of the ring, wrap loosely. It's more comfortable and gives a nice "bohemian" look.
- a) True
 - b) False