

Endless Summer

By Heidi Parviainen

There is something about turquoise and orange together that reminds me of summer. They just seem made for each other and always make me happy. I love them combined with the warm hues of copper.

You can wear them anytime and have a little piece of sunshine with you, wherever you go. This combination of warm and cool tones, reminiscent of the sun and the sea, inspired my Endless Summer Necklace.

In my Endless Summer tutorial, I will show you how to shape contemporary, linked necklace with the WUBBERS Square Mandrel Pliers.

I'll also show you how to work off the roll of wire and make your own custom, designer eye pins!



Materials List

- 2 – 7x22 faceted marquis drop beads
- 3 – 14mm orange faceted lenticular beads
- 3 – 10mm lenticular beads
- 6 -4x6mm orange faceted rondelles
- 10 – 7mm round turquoise beads
- 2 – 9x12mm faceted orange rondelles
- 1 – Roll of 16 gauge (1.29mm) dead soft copper wire
- 1 – Roll of 20 gauge (.812mm) half-hard wire
- 1 – Roll of 26 gauge (.405mm) half-hard wire

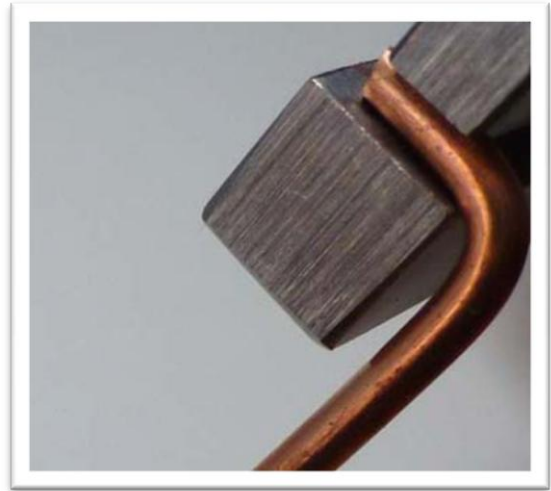
Tool List – Don't forget Safety Glasses!

- WUBBERS Small Square Mandrel Pliers
- WUBBERS Small Looping Pliers
- WUBBERS Large Looping Pliers
- WUBBERS Classic Round Nose Pliers
- WUBBERS Classic Bent Nose Pliers
- Memory wire cutters
- Flush cutters
- Ball peen hammer
- Bench block
- Rubber Block
- Safety Goggles
- Gloves
- Cotton Swabs
- Gilder's paste - Patina

Step 1

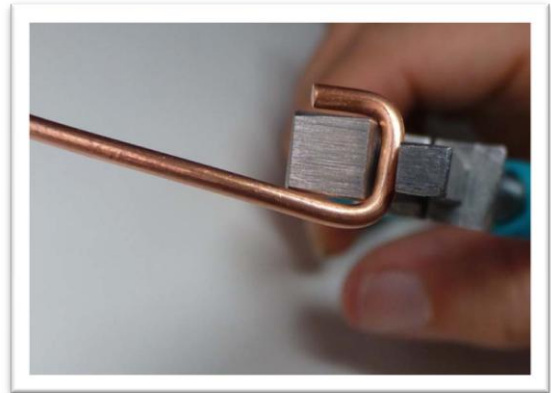
Place the tip of the 16 gauge (1.29mm) dead soft wire between the jaws of the WUBBERS Small Square Mandrel Pliers and squeeze the handles to hold the wire in place.

Use your fingers to bend the wire around the outside of the larger square mandrel.



Step 2

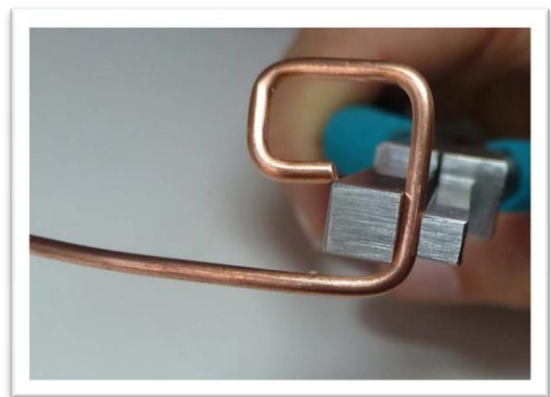
Reposition the WUBBERS and bend the wire along the outside edge of the larger square to form a second 90 degree angle.



Step 3

Slide the WUBBERS down the wire and position on the outside edge of the first coil. (The wire should be equal to 2 x the width of the square mandrel).

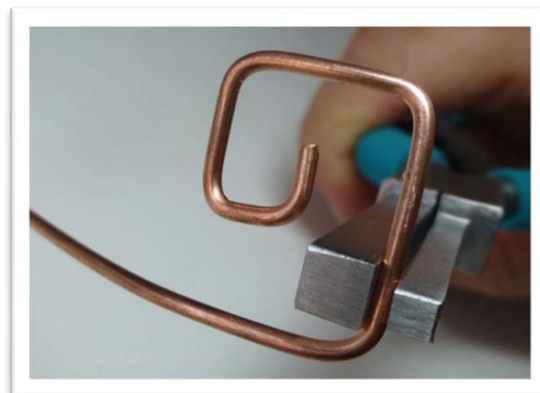
Bend the wire around the outside edge of the WUBBERS to form another 90 degree angle.



Step 4

Slide the WUBBERS down the wire, aligning the inside edge of the square to the second curve of the coil, (3 x the width of the square mandrel).

Bend the wire around the outside edge of the WUBBERS to form the next 90 degree angle.



Step 5

Slide the WUBBERS down the wire, aligning the inside edge of the square mandrel with the edge of the square coil, (3 x the width of the square mandrel).

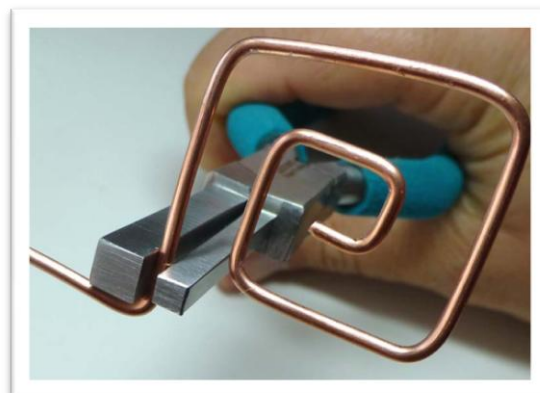
Bend the wire around the outside edge of the WUBBERS to form the next 90 degree angle.



Step 6

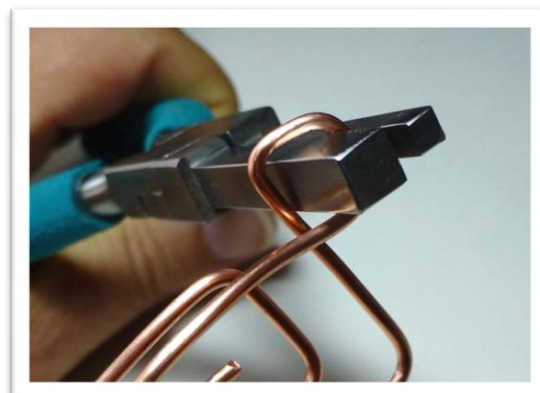
Slide the WUBBERS down the wire, aligning the inside edge of the square mandrel with the edge of the square coil, (4 x the width of the square mandrel).

Bend the wire away from the coil at a 90 degree angle.



Step 7

Reposition the WUBBERS to form a square the size of the larger mandrel.



Step 8

Use memory wire cutters to trim the wire at the end of the square.

Place the wire form on a bench block. (Use a rubber block to cushion, if desired).

Strike the corners with a ball peen hammer to strengthen.

Once the corners have been wire-hardened, continue to texturize the whole piece as desired.

Repeat Steps 1-8 to make a second square wire coil.



Step 9

Repeat Steps 1-5.

Then, slide the WUBBERS down the wire, aligning the inside edge of the square mandrel with the edge of the square coil, (4 x the width of the square mandrel).

Trim the end of the wire with memory wire cutters.

Bend the end of the wire toward the inside coils.

Repeat for 2 more wire coils, (a total of 3 with the end bent to the inside).

Use the technique described in Step 8 to hammer all 3 wire coils.



Step 10

Use the WUBBERS Large Looping Pliers to create a loop on the roll of 16 gauge (1.29mm) dead soft wire.



Step 11

Reposition the WUBBERS Large Looping Pliers to create a figure 8.



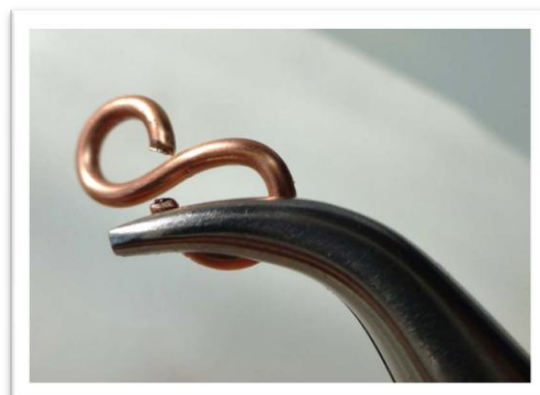
Step 12

Trim the wire from the roll, using memory wire cutters.

Be sure to use safety glasses.

Use WUBBERS Classic Bent Nose pliers to hold one side of the figure 8. Harden the other side of the wire using a bench block and ball peen hammer.

Repeat for the opposite side of the link.



Step 13

Wear disposable gloves and use a cotton swab to apply gilders paste to both sides of all hammered metal links.

Allow the links to dry for 24 hours, then buff or sand to remove any unwanted color.

Following the manufacturer's instructions, seal the pieces with your choice of sealer. Allow to dry per the directions provided by the manufacturer.



Step 14

Use WUBBERS Classic Bent Nose Pliers to open the figure 8 links. Attach the hammered links together as shown in the picture.



Step 15

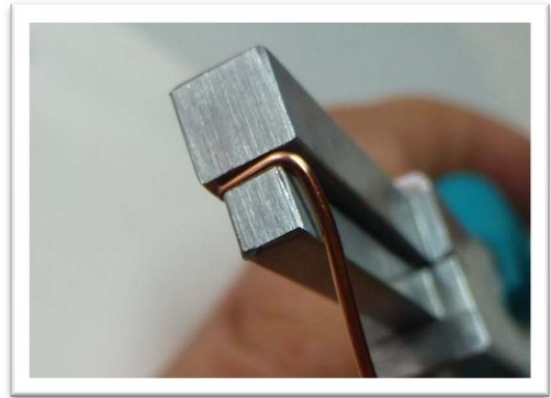
String a 9x12 faceted orange glass rondelle, a 12mm round turquoise bead, a 14mm orange lentil bead, another 12mm round turquoise bead and 9x12mm faceted orange glass rondelle onto the roll of wire.

Slide the beads down the wire a few inches to leave room for forming the end.

Place the end of the 20 gauge (.812mm) half-hard wire between the jaws of the WUBBERS Small Square Mandrel Pliers.

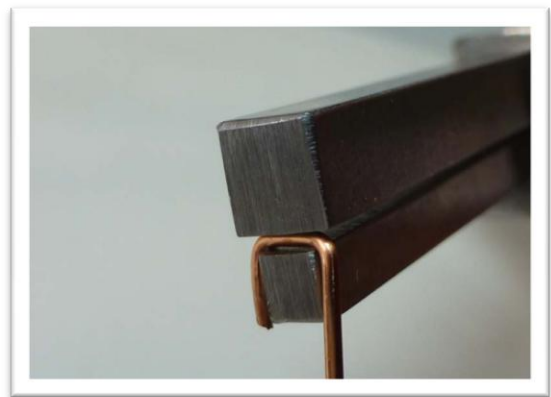
Place the wire end at the edge of the small square, as shown in the picture.

Close the jaws to hold the wire. Then, bend the wire around the outside edge of the small square.



Step 16

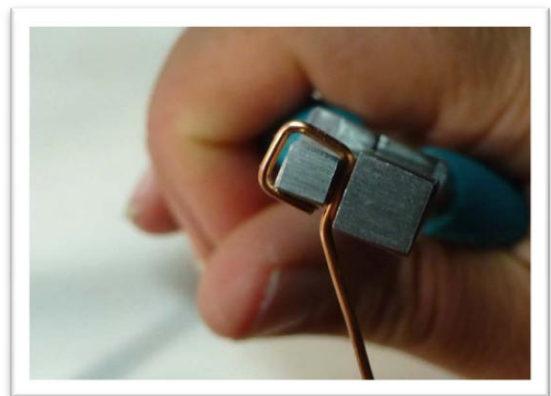
Reposition the pliers and form the next 90 degree angle in the same manner as described previously.



Step 17

Reposition the pliers again and bend the wire to complete the square.

Bend the wire against the larger square jaw at a 45 degree angle.



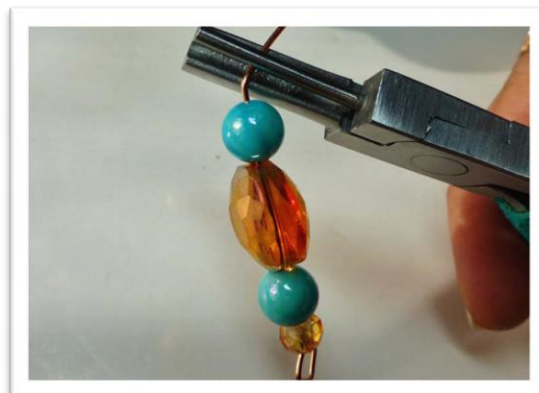
Step 18

Slide the beads down the wire to sit on the square.

Use WUBBERS Small Looping Pliers to finish the end of beaded pendant.

Trim the wire with flush cutters where the wire from the roll meets the loop.

Repeat Steps 15-18 to make a total of 3 beaded pendants.

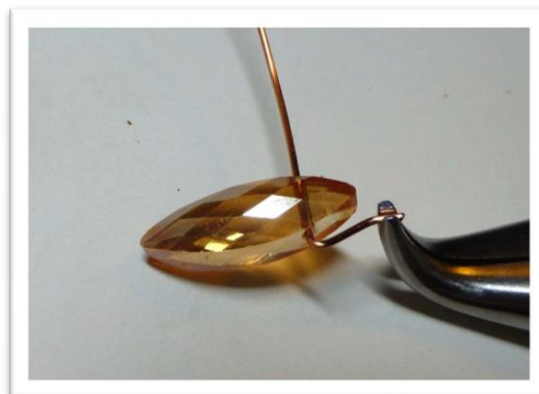


Step 19

Slide the end of the wire through a 9x22 faceted orange marquis shaped bead. Leave enough wire at the end to extend beyond the top of the bead, (approximately ½ inch or 1.27cm).

Use your fingers to bend the wire along the curved side of the bead.

Use WUBBERS Classic Bent Nose Pliers to bend the wire just above the point of the bead. The bent tip of the wire should be lined up with the points of the bead.

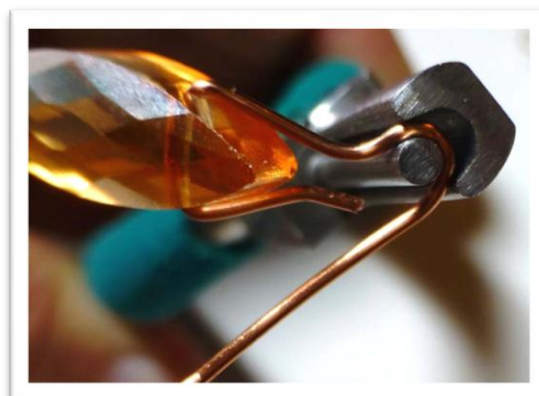


Step 20

Press the bead against the bent tail and bend the wire on the opposite side against the curve of the bead.

Use WUBBERS Classic Bent Nose Pliers to bend the wire just above the top point of the bead.

Use WUBBERS Small Looping Pliers to form a loop where the wire on the roll meets the tail.



Step 21

Hold the loop using WUBBERS Classic Bent Nose Pliers and wrap the two wires.



Step 22

Trim the wire using the angled side of the flush cutters.



Step 23

Use the WUBBERS Classic Bent Nose Pliers to compress the end of the wire against the wraps.

Repeat Steps 19-22 to make a second piece.



Step 24

Add a 12mm round turquoise bead, a 12mm faceted amber rondelle and a second 12mm round turquoise bead to the roll of 20 gauge (.812mm) wire.

Create a loop at the end using WUBBERS Small Looping Pliers.



Step 25

Create a loop at the opposite end using WUBBERS Classic Round Nose Pliers. Be sure to place the wire at least half way down the barrel, in order to form a larger loop.

Use the flat side of the flush cutters to trim the wire where it meets the bottom of the loop.

Repeat Steps 22 and 23 to make a second beaded pendant.



Step 26

String a 10mm orange lentil bead onto the roll of 20 gauge (.081mm) wire.

Use WUBBERS Small Looping Pliers to create a loop on both ends.

Trim the wire with the flat side of the flush cutters to remove from the roll.

Attach the orange lentil link to one of the beaded pendants created in Step 18.

Repeat for a total of 3 links.



Step 27

Open the eyes of the beaded pendants and attach to the hammered frame as illustrated in the picture.

The beaded marquis pendants will wrap around the center of the hammered, figure 8 links.

The orange lentil pendants will sit on the corners of the hammered squares.



Step 28

To prevent sliding, use 26 gauge (.405mm) wire to wrap the corners of the square on either side of the beaded pendant. This will also prevent the beaded pendant from coming off the frame.

Repeat for the other side.



Step 29

Cut a 36 inch length of ribbon or leather. Fold in half and slide the folded side through the square loop of the last link.

Create a loop and tuck the tails through it. Pull to tighten. Use an overhand knot to tie the tails together.

Repeat for the other side.



Review Questions

- 1) For this project, several pair of Wubbers Square Mandrel Pliers are needed.
 - a) False, only the small Wubbers Square Mandrel Pliers are used.
 - b) True. The Medium, Large and Jumbo Square Mandel Pliers are used.
- 2) After the squares are made...
 - a) You should lightly hammer the edges of the squares to harden them.
 - b) You should patina them immediately.
 - c) They should be sanded and shaped with a file.
- 3) To patina the wire, use Guilders Paste, apply with a cotton swab, and...
 - a) Rinse in water immediately to keep the patina from getting too dark.
 - b) Let the pieces sit for 24 hours, then sand or buff lightly and spray on a sealer.
 - c) Let sit for 25 minutes then rub the wire with light sand paper.
- 4) When the time comes to add the bead drops, you may still work directly from the spool of wire.
 - a) False. Each piece of wire must be individually cut to size first.
 - b) True. It will save time and save wire.
- 5) The technique of wrapping a 26 gauge wire on either side of the bead dangles will...
 - a) Strengthen the squares.
 - b) Prevent the beaded dangles from sliding.
 - c) Make the dangles very strong.
- 6) There is no need to wear safety glasses while doing this project because nothing is hazardous.
 - a) True. You only need safety glasses when soldering or fusing.
 - b) False. Bits of clipped wire can fly into your eyes. Safety glasses should always be worn while working in the studio.