

## Polymer Clay and Copper Chain Bracelet

By Toni Pullen & Studio-Perle

I love metal jewelry! This trendy bracelet comes together quickly with a polymer clay focal component and antique copper rolo chain. The polymer component is textured and shaded to look like antique brass with copper highlights. Add some bling with a sparkly Swarovski crystal and a charm. Make more than one with various chains or other polymer clay colors and textures.

### Materials List

- ½ oz Premo Sculpey Accents polymer clay – Antique Gold
- 5 inches – 10mm antique copper rolo chain
- 2 – 8mm antique copper jump rings
- 2 – 6mm antique copper jump rings
- 1 – 12mm antique lobster clasp
- 1 – 2 inch ball headpin – antique copper or antique brass
- 1 – 8mm round Swarovski crystal – Vitrail
- 1 small antique brass flower charm
- Perfect Pearls Mica Powder – Heirloom Gold and Perfect Copper
- Sculpey Glaze – Gloss or Satin
- TIP: Using the materials listed will make a 7 ½ inch bracelet. If another size is needed, take a wrist measurement to determine the proper finished length.

### Tool List – Don't forget Safety Glasses!

- |                                  |   |   |
|----------------------------------|---|---|
| • Wire cutters                   | • Oven thermometer                          | • WUBBERS Classic or Baby Chain Nose Pliers |
| • Clay cutting blade             | • Small ceramic tile                        | • WUBBERS Classic or Baby Bent Nose Pliers  |
| • 1 ½ inch oval clay cutter      | • Cardstock or index card                   | • Dedicated work surface                    |
| • Needle tool                    | • Texture sheet                             |   |
| • Dust mask                      | • Small soft brush                          |   |
| • Acrylic clay roller            | • Medium/fine grit emery board or sandpaper |   |
| • Dedicated oven for baking clay | • WUBBERS Classic or Baby Round Nose Pliers |   |



**SAFETY TIP:** Keep clay and clay tools away from all food sources. Protect work surface with waxed paper or non-stick craft sheet

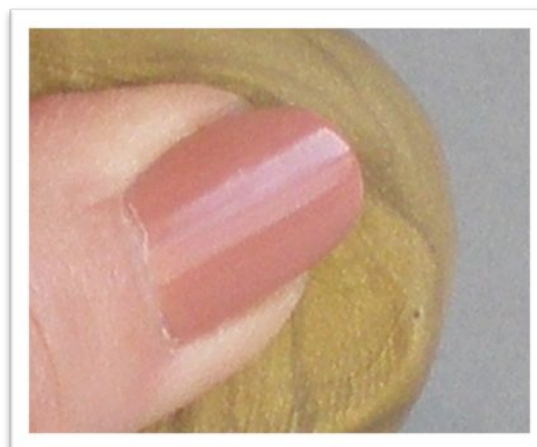
### Step One

Working on a protected surface, cut ½ ounce of gold clay with a clay-cutting blade. Blades are sharp! Use with caution!



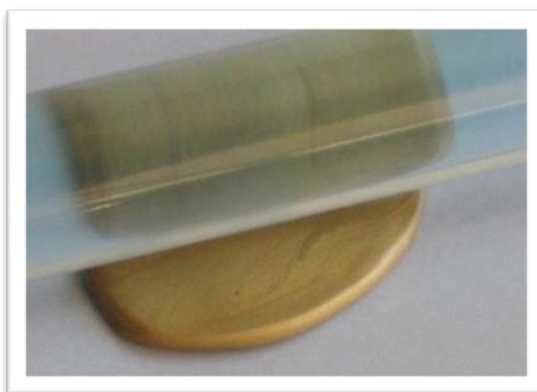
### Step Two

Begin conditioning the clay by first working it into a ball and then flattening it. Continue until the clay is soft and workable.



### Step Three

Roll the flattened ball smooth with an acrylic clay roller to a thickness of approximately ¼ inch. Check carefully for air bubbles.



### Step Four

Texture the rolled clay with a texture sheet. Press firmly to ensure a deep impression or use the clay roller to imprint a texture onto the clay.



### Step Five

Place the oval cutter in the desired location and cut by pressing straight down into the clay.



### Step Six

Pierce the clay component with a needle tool making a hole on each end. This is where the 8mm jump rings will attach after baking.



### Step Seven

Using a small soft brush, gently dust the clay with Heirloom Gold mica powder applying some into the crevices. Using the same brush, light apply Perfect Copper highlights in random areas.



**SAFETY TIP:** Don't forget to wear a dust mask as some mica powders may contain actual metal particles.

### Step Eight

Gently remove the oval from the work surface, first to an index card or piece of cardstock, and then onto the ceramic tile. Paper keeps the backside of the clay smooth while baking. Bake and cool completely. If necessary, buff edges with a fine grit emery board or sandpaper.



**TECH TIP:** Dedicate a toaster oven or small craft oven for baking clay and always preheat for 20 minutes using an oven thermometer. Never use a microwave! Follow the safety guidelines, baking times and temperatures as directed on the clay package.

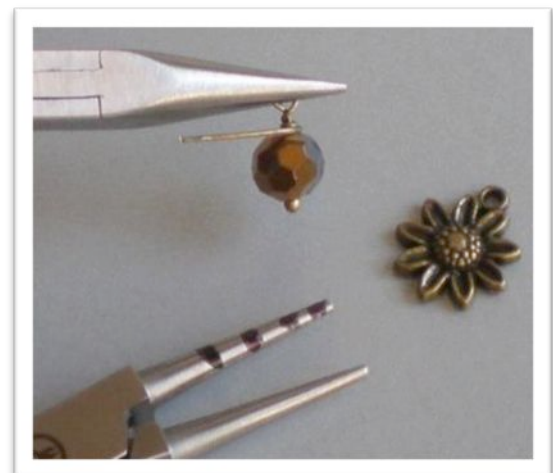
### Step Nine

Seal the baked component with Sculpey Glaze using a small soft brush. Other sealers can eventually crack and become yellow. Sealing protects the finished piece and prevents loss and fading of the mica powders over time. Let dry completely.



### Step Ten

Make a wrapped loop using WUBBERS Round Nose pliers and the headpin on the 8mm crystal. Marking the pliers at several spots on the jaw helps achieve consistent sized loops.



### Step Eleven

Open one of the 6mm jump rings using 2 pairs of WUBBERS pliers. Attach the crystal and flower charm and close the jump ring.



### Step Twelve

Assemble the bracelet by attaching both 8mm jump rings to the component. I suggest adding the charm/crystal dangle opposite of the clasp.



### Step Thirteen

Place the lobster clasp on the other 6mm jump ring and attach to the chain. How cool your bracelet looks!



## Review Questions

- 1) Polymer clay should be rolled, textured and shaped on the following....
  - a) A non-stick craft sheet
  - b) Waxed paper
  - c) A kitchen table
  - d) Only a and b
  
- 2) True/False. Polymer clay can be baked in a microwave....
  - a) True
  - b) False
  
- 3) Polymer clay can be sealed with....
  - a) Clear nail polish
  - b) Decoupage sealer
  - c) Sealer/glaze made especially for polymer clay
  - d) Hairspray
  - e) Both c) and d)
  
- 4) True/False. Mica powders may contain actual metal particles.
  - a) True
  - b) False
  
- 5) Jump rings can be opened and closed by using...
  - a) Two pairs of WUBBERS Classic or Baby Chain Nose pliers
  - b) A hammer and pair of Wubbers Baby Round Nose Pliers
  - c) One pair of WUBBERS Classic or Baby Chain Nose pliers and one pair of WUBBERS Classic or Baby Bent Nose pliers
  - d) Both a) and c)